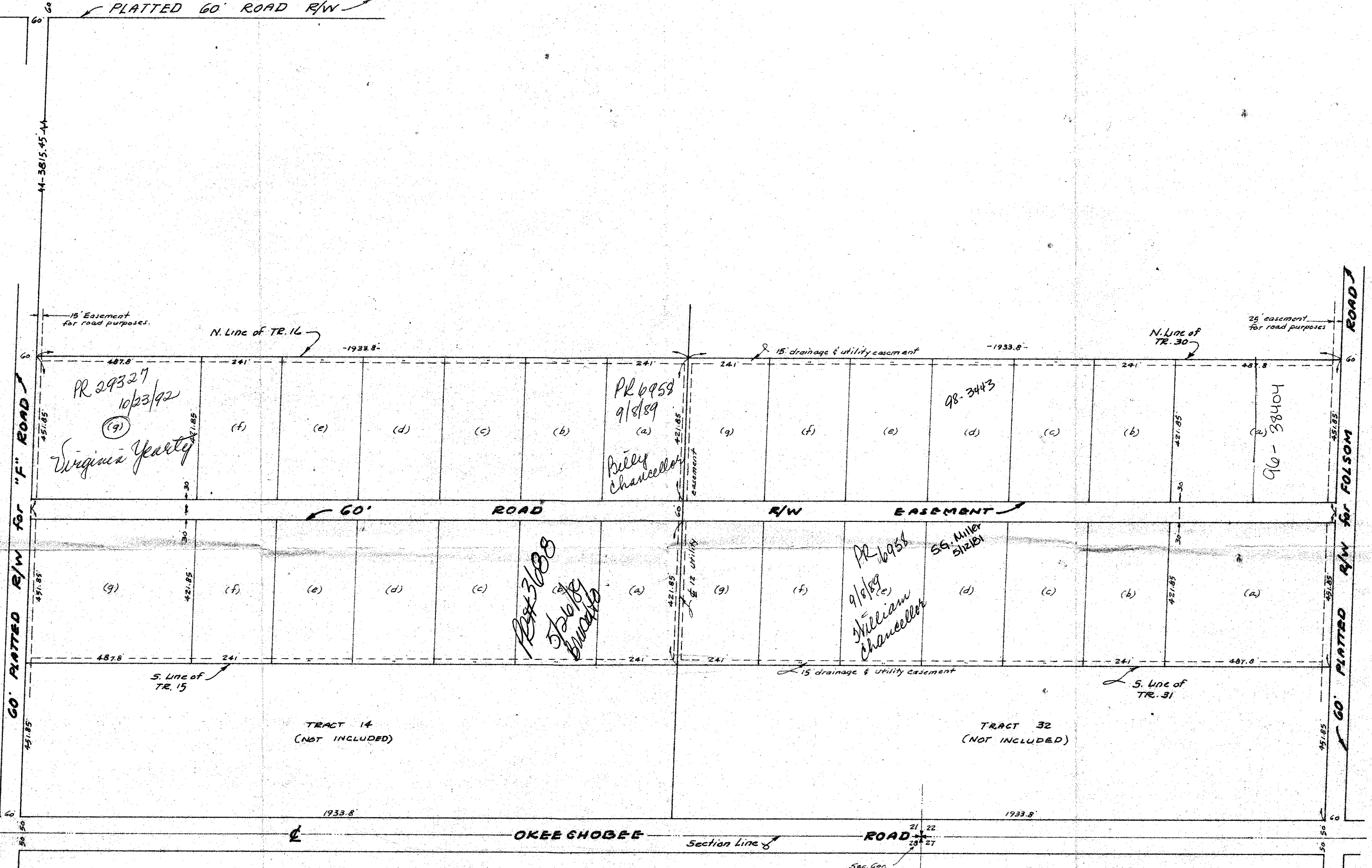


N. Line of Sec. 21, 43/41
PLATTED 60' ROAD R/W



TRACT 14
(NOT INCLUDED)

TRACT 32
(NOT INCLUDED)

OKEECHOBEE

Section Line

ROAD

ur0380.tgr
LOXAHATCHEE GROVES TR 15,16,30 & 31
BK F

JOHN P. DAVIS & ASSOCIATES, INC.
REGISTERED ENGINEERS & LAND SURVEYORS
WEST PALM BEACH, FLORIDA LAKE WORTH.

PROPOSED SUBDIVISION OF
TRACTS 15, 16, 30 & 31, BLOCK "F"
LOXAHATCHEE GROVES
(Plat Book 12, Page 29)

LOXAHATCHEE, PALM BEACH COUNTY, FLA.

FOR
W. V. HOECHERL

DATE: JULY 1, 1972 SCALE: 1" = 200' REF. Plat 12-29
REC. Plat 12-29
F.B.

